

MG series

MG800R-6S / MG700R-5S
MG700R-5C / MG600R-5S

Anyone should be able to enjoy fishing easily.
It can be found in your daily life, or you can find it on your travels.

MG800R-6S



Huerco MG800R-6S

[CLICK HERE](#)

- 8ft 00inch
- closing size : 460mm
- 6pcs
- weight : 130g
- line : PE #0.4 ~ 1
- casut weight : 2 ~ 10g

Long-throw model for microgames such as float and caro

The concept of the 8-foot long model is "flying distance". The ratio of the length of the grip section and the blank section is designed to achieve the optimum balance between long casting performance and usability, and it is possible to cast light weight lures such as small plugs, jigs, and egis by making use of the long effective length.



MG700R-5S



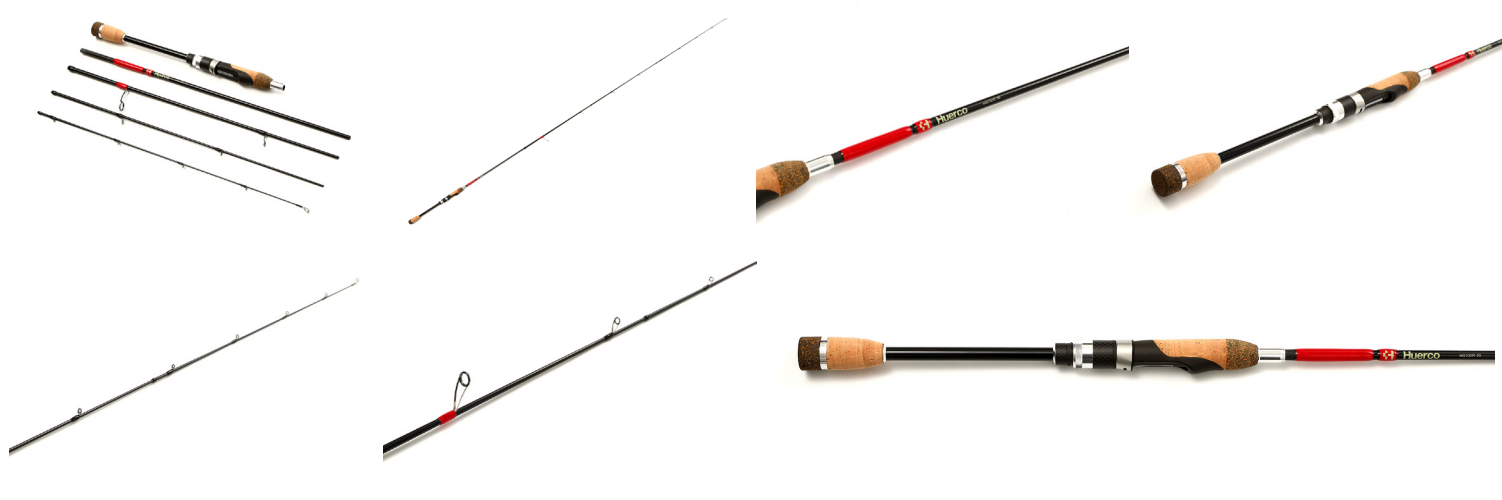
Huerco MG700R-5S

[CLICK HERE](#)

- 7ft 00inch
- closing size : 498mm
- 5pcs
- weight : 110g
- line : PE #0.3 ~ 0.8
- casut weight : 1.5 ~ 7g

The all-rounder in microsalt gaming

With a length of 7 feet that is easy to handle, it is a microgame standard model that is easy to use and highly versatile for anyone. In the MG700R-5S renewal version (R), the blank material and guide parts have been changed, making it softer than the previous model and giving it a more delicate feel.



MG700R-5C



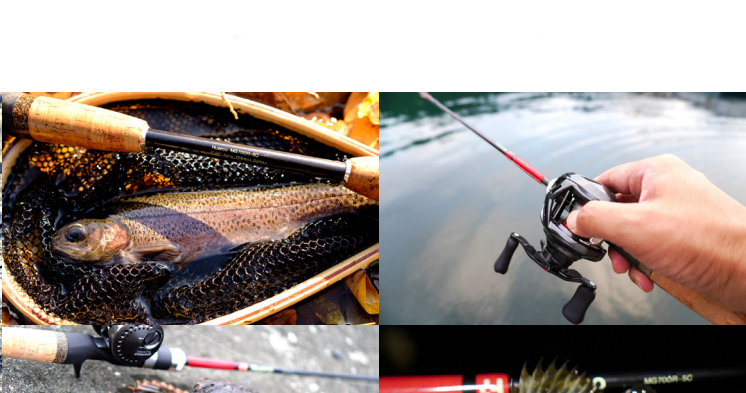
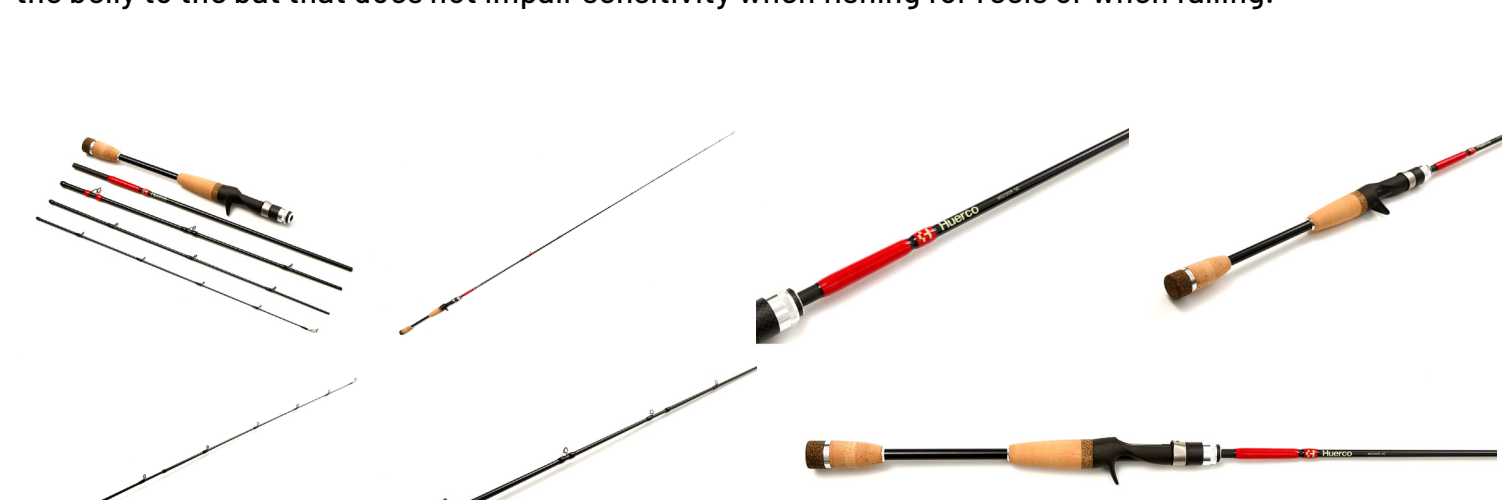
Huerco MG700R-5C

[CLICK HERE](#)

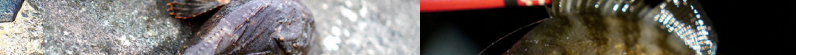
- 7ft 00inch
- closing size : 496mm
- 5pcs
- weight : 125g
- line : PE #0.8 max
- casut weight : 2 ~ 10g

Microgame standard bait model

The first baitcasting model in the MG series that supports a wide range of microgames. It has a supple tip for casting light weight lures such as jig head worms and small plugs, and a moderate tension from the belly to the bat that does not impair sensitivity when fishing for reels or when falling.



MG600R-5S



Huerco MG600R-5S

[CLICK HERE](#)

- 6ft 00inch
- closing size : 438mm
- 5pcs
- weight : 100g
- line : PE #0.2 ~ 0.6
- casut weight : 1 ~ 6g

Highly sensitive short model suitable for Aging

It is a short model based on the concept of a "simple and highly sensitive aging rod" that makes it possible to catch a bite immediately. Sharp operation feeling assuming cast weight from 1g. A tip section equipped with a short carbon solid that makes it easy to cast a very small jig head and does not repel bites that suck in.

