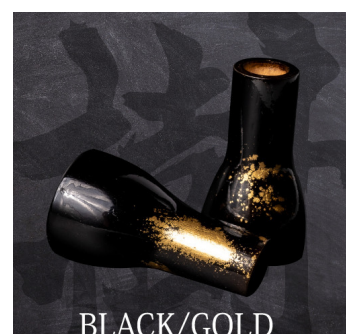


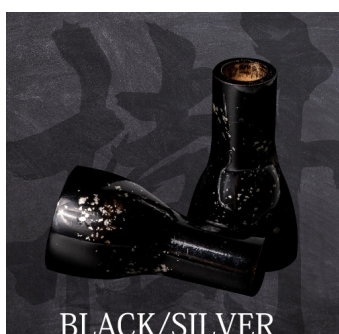


Traditional craftsman's work

ITSUKI SELECTION



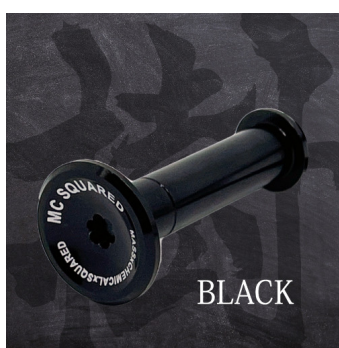
BLACK/GOLD



BLACK/SILVER



CLEAR/WOOD



BLACK

MC SQUARED ITSUKI KNOB

[CLICK HERE](#)

Line up

- Handle knob color

BLACK/GOLD

BLACK/SILVER

CLEAR/WOOD

- Shaft color

BLACK

ITSUKI KNOB

Each piece is carefully crafted by one of Japan's best traditional craftsmen.

MC SQUARED
MASS×CHEMICAL×SQUARED



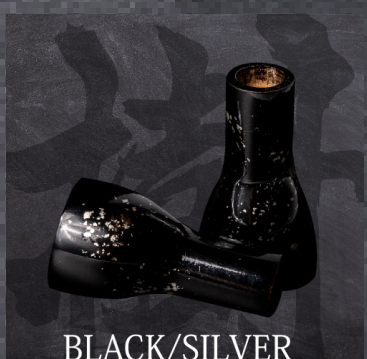
By using cherry wood, it is both light and durable, and by applying multiple layers of lacquer, it is also water resistant.



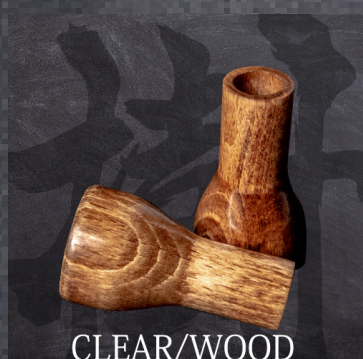
Since it is handmade by craftsmen, the number of production is fixed each year, and each handle knob has the same pattern and looks like a craft item.



BLACK/GOLD



BLACK/SILVER



CLEAR/WOOD



BLACK

ITSUKI KNOB

[CLICK HERE](#)